

WHISTLER ANSWER



50¢

solar
ENERGY



BETTY CHABA
A Lady in Lights!

WINDSURFING
Tips on Buying New Boards

MARCH '81

MAILED TO EVERYONE IN SEA TO SKY COUNTRY

EDITORIAL PAGE

On Saturday April 11th Whistlerites will be voting to determine whether or not the Municipality will be spending \$1.925 million for implementation of The Recreation Master Plan.

The Plan was provided by Professional Environmental Recreation Consultants Ltd. at a cost that's apparently 'not public knowledge'. The reason for the secrecy is unclear but perhaps it has something to do with the plans rumoured cost of \$25,000. At that price I can understand their anxiousness to implement it.

The plan begins with a 5 page philosophic discussion on the term "Demand" which reads like a planning student's term paper (just might be) and ends with a paragraph on "who Pays." I think we do!

The Plan proposes a Linear system running the length of the valley designed to accommodate bicycles, cross country skiers, horses, hikers, snowshoers, 4WD's, trail bikes, snow mobiles, and joggers. Not all in the same place, of course, but multi-use wherever possible.

The combined with a system of stationary recreation areas designated from the Cheakamus River to Emerald Estates.

There are good and bad points in the study. The idea of connecting our divergent population centres is of course, good. But to connect them by a 10ft right of way (divided into a 6' paved bicycle path and 4' gravel walkway) all graded to a 5-10 degrees maximum slope could be a trifle extravagant, to the tune of \$122/lineal yard. (their highest figure) Hiking trails, especially in the mountains, aren't expected to have that sort of engineering. The Blueberry trail is perfect example of a sensible and attractive walking trail.

The Seawall in Stanley Park is a case of what can go wrong with multi-use trails. First the bikes are separated from the walkers... then they're banned... then comes the roller skaters... they're banned... then there's the skateboarders, and now they have motorcycle cops to make sure that everyone is walking.

The author of the report must be a real baseball fan. He proposes as a minimum standard 2 softball and one baseball diamond for every 1,500 permanent residents, which when translated comes to \$50,000 worth of baseball fields. The one place I have never seen a line up in this town is at the ball park.

But to be fair there are some good points. Their first priority is to maintain the attractiveness of the natural environment. Great!

They also recognize the imminent development on the lower slopes of Blackcomb and the environmental sensitivity of the Lost Lake area. Hopefully Lost Lake will not end up a reflecting pond for a string of condos, or have so many trails going around it that it looks like a woody Daytona 500.

This article can only touch on elements of the study. \$1,925 million will only pay for certain elements of the implementation of the Recreation Plan. There are some big holes that a lot of money could fall into. What exactly do we get for our money? We need a lot more detail than, "Let's all plan on walking together over to the park beside that sparkling lake". (A quote from Your Parks and Recreation Committee, Whistler Question, March 5/81.)

Both the Question and the Shopper ran stories on the opening of Whistler's new Black Chair (Seppo's run to most of us) but they both missed (or didn't want to tell) the best part of the Story. Area manager Bob Ainsworth and Whistler's father, Franz Wilhemsen were stuck on the chair for an hour and a half because of an electrical breakdown. (Unfortunately Doug Mansel can only be at one place at one time) I guess they were pretty hot when they finally got to the top. But cheer up guys-It could have cost you \$15.

The Association of Canadian Mountain Guides is holding their assistant winter guide course in Whistler, from April 11 (Saturday) to April 25, 1981.

Local guide Herb Bleuer of B.C. Powder Guides is co-ordinating the course. The two level, assistant guide's diploma is necessary to become a fully qualified ski guide. Pre-requisites for the course are a current standard first aid course, an avalanche course, skiing ability, experience and general mountain knowledge.

The assistant guides course cost \$600 - and a \$100 deposit is required. There is some financial assistance available to young Canadians who wish to make a living in Mountain Guiding, in the form of the Woladarsky Scholarship and the Elizabeth Rummel Scholarship. Applications should be submitted to the Alpine Club of Canada, P.O. Box 1026, Banff, Alberta T0L 0C0, phone 762-4481. Scholarships are limited.

If you are already employed in the field of guiding there is financial assistance available from Canada Manpower. It is your employer who must apply on the basis that you are improving your job qualifications. Up to 75% of the course expenses can be picked up by manpower.

WHISTLER ANSWER

EST. 1977

BRITISH COLUMBIA
WHISTLER MOUNTAIN

The Whistler Answer a monthly newsmagazine published by High Country Communications Ltd. Our mailing address is General Delivery, Whistler, B.C., Canada V0N 1B0

We welcome unsolicited material but can take no responsibility for lost materials.

Material and artwork appearing in the Whistler Answer may not be reproduced without permission of the publisher.

The Whistler Answer is registered with the National Library of Canada. I.S.S.N. 0705 7148

Editor and Art Director

CHARLIE DOYLE

Marketing

MICHAEL LEIERER

Office Supervisor

DIANA PECKFORD

Writer at Large

JIM MONAHAN

Penalty Box

BOB COLEBROOK

Staff Photographer

GREG GRIFFITH

CONTRIBUTORS

To this issue

Gord Harder

Randy Hooper

Andy Munster

Danny Paul

Solwest

Andrew Stoner

Ian Verchere

Ray Weins

Shelly

Larry Gunn

Cover Photo

Patroller Cathy Jewitt skiing the trees.

Michael Leierer Photo.

The Whistler Answer is published by



For information please phone

(604) 932-5332

SPORT SHORTS



B3

The first Pacific Hi Test Telemark Dual Slalom was held on Feb. 15th on Catskinner on Blackcomb Mountain.

Despite gusting winds and blowing snow the race was a definite success. There were twenty competitors and over thirty-five pairs of skinny skis on the mountain. The snow and course conditions were excellent and local racers placed well. Dennis Hanson of the Blackcomb Ski School won the race on home turf while Jon Anderson longtime Whistler Mountain skier placed third and suggested a three pin downhill race for the next event. Craig Barker of no fixed address placed 8th and his trainer 'Mel' has vowed to improve his standings in the next race with copious amounts of ambre colored hi-protein training liquid that he dispenses so well. Craig was not available for comment.

Race organizers would like to thank the sponsors Carling O'Keefe, Leisure Time Distributors, O. V. Sports (Seattle) Kazama Skis International, Carleton Recreation Equipment, Coast Mountain Sports, Great Outdoors Equipment, Sigge's Sports Villa Whiski-Jack magazine and especially those who spent two and a half hours standing in the snow, timing and judging.

The next race in the series will be held on Blackcomb on March 15th. To register to race or help out contact the Vancouver Telemark Society, 304-215 St. Andrews St., North Vancouver or be at the base of Blackcomb by 9:30 AM the day of the race.

On April 18th, Kazama is sponsoring a four day nordic downhill and telemark camp.

Three days of lift assisted skiing on Blackcomb Mountain will give you an opportunity to develop telemarking while one day of backcountry skiing will get you into deep show turns.

The course cost is \$120- which includes all instruction, lift tickets and the use of Kazama Mountain High and Telemark Comp Skis.

For further information contact Craig Barker, Gen Del., Whistler or the Telemark Society.

The regular season's over and the Whistler Winterhawks came up in 1st place. It was a close finish between Whistler and the Squamish Truckers.

Playoff dates and times are listed so come on down to the Squamish Civic Centre and cheer on the Winterhawks.

The team would like to thank the following sponsors for their help throughout the season: Rich Miller (Muffin Granny), The Highland Lodge, Rocky Mountain Electric, Fenwick Construction, Husky Service, The Whistler Question, The Whistler Answer (blush) and all the fans that supported us throughout the year.

FINAL PLAYOFFS Winterhawks vs. Truckers

Wed., March 11th - 9:15
 Sat., March 14th - 8:15
 Wed., March 18th - 9:15
 Sat., March 21th - 8:15 } if necessary
 Wed., March 25th - 9:15



Blackcomb Mountain hosted it's first figure 8 contest on Sunday Mar. 8.

The top ten skiers were:

	Points
1. Tom Simister, Andris Kikauka	45
2. Rernard Leroux, Colin Morrison	44
3. R. Denham, S. Hughs	42
4. Dave Patterson, Jim Wharin	41
5. Richard Angus, John Paone	37
6. Peter Xhignesse, Pat McDonald	36
7. Dave Laiik, Richard Juryn	34
8. Mike Biaxland, Hank Receiver	32
9. Bill Harrison, Mark Hohenwater	32
10. Chuck Linsey, Dave Denurs	31

BENNIE'S BAR & GRILL

JOIN US FOR

**Brunch
Lunch
Dinner**

At the
WHISTLER Vale HOTEL
8AM → 11PM



THE BLACK BEAR

At Alice Lake Junction

Dinner 5pm-10pm
SKIERS BREAKFAST
 7am-10am



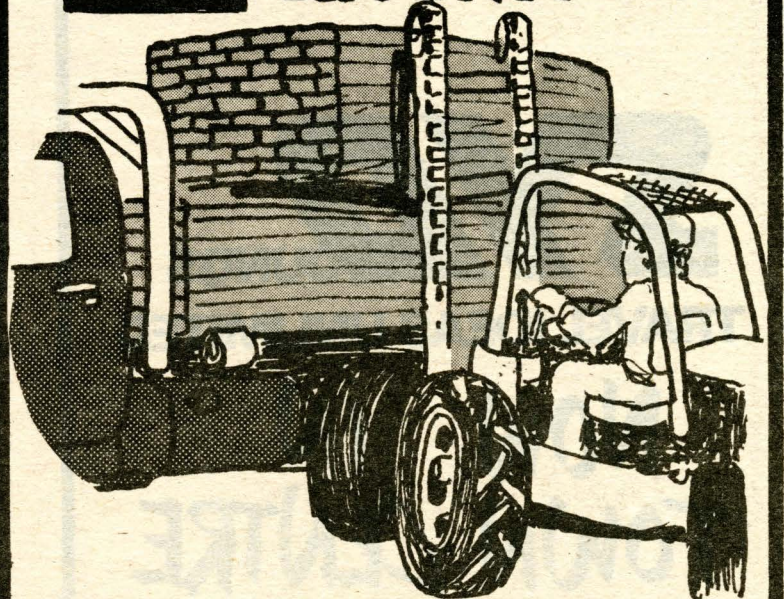
GARIBALDI

BUILDING SUPPLIES LTD

OPEN 8AM - 4PM



A MEMBER OF
TIM-BR-MARTS LTD



SERVING WHISTLER FOR 10 YEARS

WHISTLER
932-5424

SQUAMISH
898-3616

Highland Lodge -932.5525

DINNER

TUESDAY - SUNDAY
6PM - 10PM

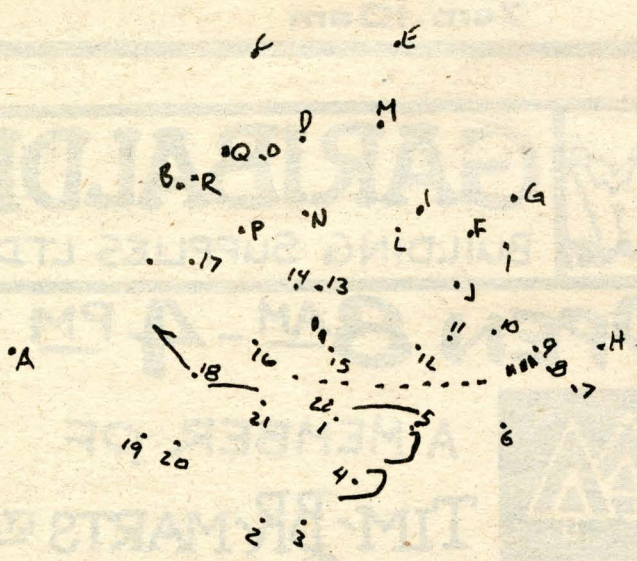
Continental
BREAKFAST
SEVEN DAYS A WEEK
7AM - 9:30AM



THE RANCH

MONDAY - SATURDAY
4PM - 1AM
SUNDAYS
4AM - 11PM

Red Heather Recreation —*
PATAGONIA FLEECE CLOTHING
898.3866



SYD JUNGES

TRAVEL IDEAS UNLIMITED

NOW IN
TOWN CENTRE

PHONE - 932.5757
RESIDENCE - 932.5662
VANCOUVER - 688.4813

solar energy

ACTIVE & PASSIVE



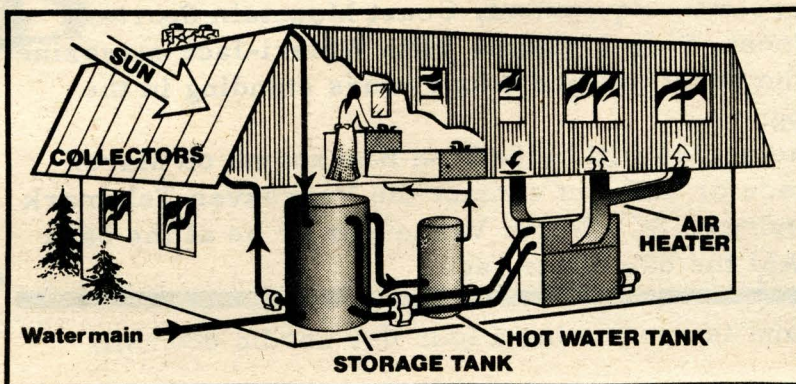
Solar Energy is distributed across Canada at the rate of about one barrel of oil per square meter per year. With this magnitude of useable energy FREE for the taking, one would be a fool to ignore solar principles in the construction of a new home or renovation.

The basic design principles are simple. The structure is oriented so that the south facing wall has the largest percent of windows to admit the low winter sun as it travels from east to west. The north colder wall has few windows as the greatest amount of heat loss in a house is through it's glass.

Even on cloudy days, if it is light out, there is energy available. The Kitsun solar heated townhouse in Kitsalano spends about \$60 per year in heating bills. Not bad for an area that receives as much cloud cover as it does.

Solar design is divided roughly into two main types, ACTIVE and PASSIVE.

The active system is one in which the thermal energy is captured by a collector device transferred to a liquid or air and is pumped or blown to a thermal storage compartment, to be dispersed throughout the interior as needed. Domestic hot water and swimming pools can be heated in much the same way.

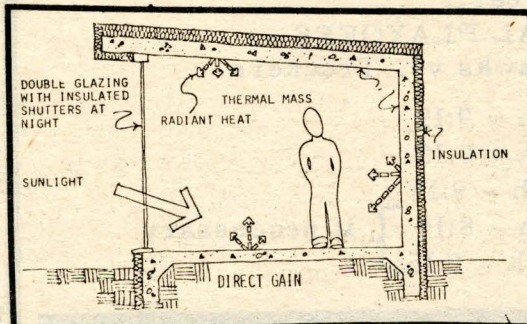


ONE ACTIVE SYSTEM

The Passive system is one in which the thermal energy flows are by the natural mechanisms of heat transfer: conduction, natural convection and radiation. No outside energy source is required for the passive solar house becomes the collector and storage system.

The control of heat gain and heat losses within a building are the keys to a successful passive solar system. In order to collect solar energy within a building without making it rise above the comfort zone, the building must contain materials that are able to absorb incoming solar energy. To limit the temperature rise of a room involves matching the type and amount of the material to the incoming solar energy and the period of storage desired. The most commonly used materials for heat storage within buildings are masonry (concrete and rock) and water. These materials are used because of their high heat capacity. Using a material with a high capacity reduces the volume that the heat storage material occupies.

Three basic configurations for passive solar heating systems are illustrated in the following sketches:

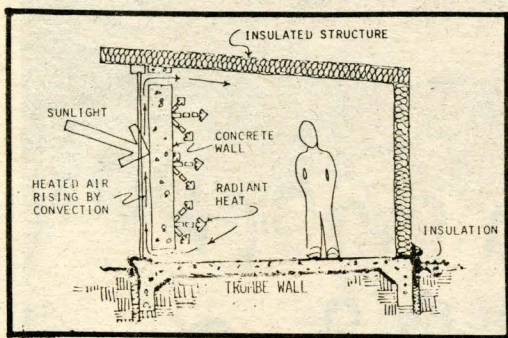


1) DIRECT GAIN

In a direct gain solar space heating system, sunlight is allowed to enter the building directly through south facing windows and skylights. When sunlight strikes the floors and walls part is absorbed and stored as thermal energy, part is converted to heat

and a small amount is reflected out. In a properly designed structure, the floors, walls and ceiling will reach a maximum temperature of about 30°C. When the room temperature drops below 18°-21°C or when people or objects in the room are cooler than this temperature, the floors, walls and ceiling act as large low temperature radiators. Radiant heating is the most efficient and comfortable means of heat transfer.

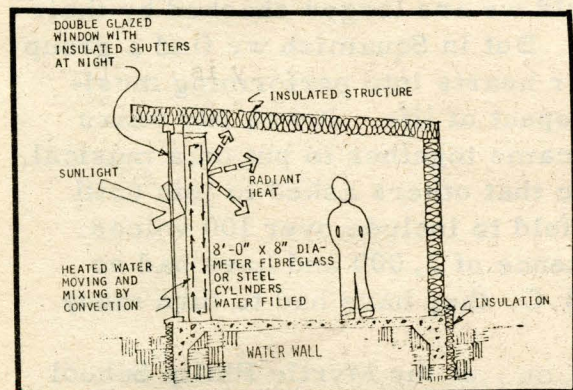




2) TROMBE WALL

In this case, instead of allowing sunlight to enter the room directly, the solar radiation passes through a double glazed south window where it is immediately intercepted by a 200mm to 300 mm (8 to 12 inches) thick dark concrete wall. The exterior surface of the concrete wall is painted black or a dark tone of almost any colour for absorption of sunlight. Located at the top and bottom of the wall are vents that allow air to enter the space between the glazing and the concrete wall. As the outer wall surface is heated, the air next to it is in turn heated and rises by convection to the top of the wall where it is vented into the room.

As well as being transferred to the air, a large part of the heat travels through the concrete wall, where it appears about eight hours later on the interior surface. The interior of the building is space heated by a combination of radiant heating and hot air heating. Vents should be closed off at night to prevent reverse convection which would act to cool the building.

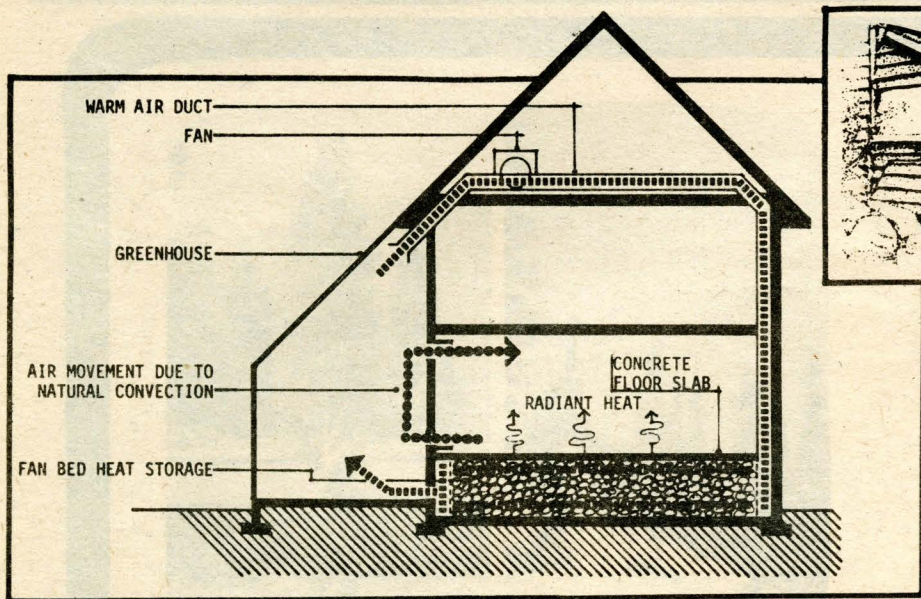


3) WATER WALL

The water wall is a direct extension of the trombe wall idea except that water is used as the storage and collection medium. The water is contained in vertical steel or fiberglass cylinders. The south side of the wall is painted black or a dark colour and placed behind double glazing, preferable with night time insulation. Water, with its larger heat capacity and its ability to move and mix by convection, is generally a more efficient and compact means of collecting solar energy and storing it.

The ability of water to convect within its storage containers keeps the water next to the collection surface cool - increasing its efficiency by decreasing heat losses.

Insulated shutters placed over the double glazing at night will greatly enhance the performance of a passive solar system - especially of a trombe or water wall.



GREEN HOUSE EFFECT

A greenhouse built on the south wall of an existing house is a variation of the trombe wall system and can provide a portion of the space heating required in the home. And it is more than a heat collector! It can provide vegetables for the table, a vacation home for weary house plants and a wonderful place to have tea on a sunny winter afternoon.

For any solar applications to be effective the structure must be well insulated. Walls should be insulated to R20 or 6 inches thick. The house should have a thoroughly sealed plastic vapour barrier to reduce air change and all windows should be double or triple glazed with some sort of night insulation installed. (shutters, drapes, etc.)

The Vancouver area receives an average of 160 hours of bright sunshine per month over a year. The amount of energy and money saved by putting solar principles to work for you is monstrous. It is an inflation proof investment requiring expenditure now for financial returns in the future.

And the ancients were right- There's no better way to live than in harmony with the sun and it's cycles.



Whistler
HARDWARE
in the town centre
932-3863

Red Heather Recreation
PALMS & ANORACKS
898-3866

TANGLEWOOD
INDUSTRIES
CONCRETE & WOODFRAME
CONSTRUCTION
RENOVATIONS & FINISHING
ROBERT CURRIE
 Box 243. WHISTLER
932-5095

FACE WHISTLER WINTER WITH A JEEP 4.WHEEL DRIVE.

SEE ROY CALDER AT MOUNTAINVIEW MOTORS
 AMERICAN MOTORS
 Renault
 AND JEEP PRODUCTS
1600 MARINE DR. NORTH VANCOUVER 980-3431

WHISTLER
Cleaning Services
Residential House Cleaning
Commercial Cleaning
LEEANN DOOLAN 932-3117 & 932-5337

Red Heather Recreation — *
DOWN HILL SKI REPAIR
& RENOVATION 898-3866

Pg 6



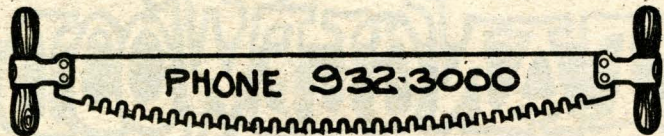
Mon. - Fri. 6-10:30
 Sat. 5-10:30
 Sun. 5-10

Altitude Adjustment Hour
FREE CHEESE FONDUE

4 - 6pm
 After Dinner Deserts & Delicious Coffee's
 in the Lounge
 6pm - 1am

JOIN US FOR BRUNCH Friday-Sunday
 11:30-2:30

From Heavenly Hamburgers to Eggs Benedict



The Cut Above

DINING ROOM
 At the Whistler Creek Lodge
 Reservations Recommended

932-3000
 Tues. - Sat.
 6pm - 10pm



A most unusual phenomenon has taken place in Squamish. As we consider young people in today's world we are longer shocked by their involvement in drugs and casual sex. But in Squamish we find a group of young people who have poured their hearts into performing musicals directed towards the spiritual aspect of life. It was two years ago this spring that 22 young people came together to put on a musical. What their peers saw was so dynamic that others asked to join until today the Chorale has increased fivefold to include over 100 voices. They have performed in front of audience of 2,000 and have had so many invitations to sing throughout B.C. they have had to turn many of them down.

On Saturday, March 28th, 7:30 p.m., at the Myrtle Philip School the Alta Lake Community Club and Whistler Community Church are privileged to bring and sponsor the Chorale here in Whistler. They will bring their own staging, backdrop, lighting, sound system and costumes to present, "The Witness". For those who have seen them before, you will agree with me, we are fortunate indeed to bring such a high quality chorale to Whistler. It is a rare treat to see and to hear such a performance.

Ray Wiens

Sneak a Peak

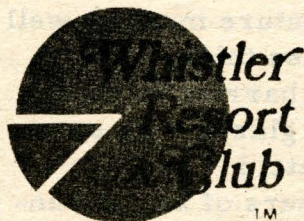
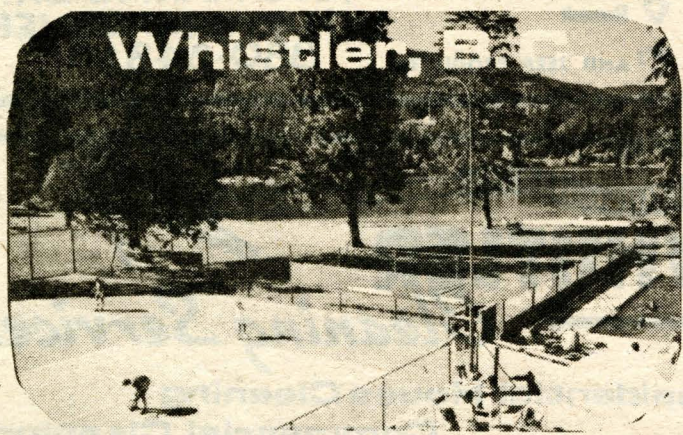
AT THE NEWEST RESORT IN TOWN

You are invited to visit us at Whistler Resort & Club

See the newest interval ownership resort on Whistler Mountain and learn how you can freeze today's costs of vacations forever. Interval Ownership allows you to be your own landlord through registered title ownership of your own luxuriously furnished condominium. Our owners enjoy the flexibility of exchanging vacation locations at more than 200 resorts around the world, practically Rent Free. Stop by the resort and tour our models and facilities.



When you tour our resort and amenities you will receive your selection of a beautiful matted colour print by famed Whistler photographer, Greg Griffith. A \$50 value.



P.O. Box 279
 WHISTLER, B.C. V0N 1B0
 Phone: Vancouver direct
 (604) 685-2724
 Whistler 932-4143

YES — I'M INTERESTED in learning more about ownership in the WHISTLER RESORT & CLUB.

Name

Address

Phone..... Code

MAIL TO: Whistler Resort & Club,
 Box 279, Whistler, B.C. V0N 1B0

Betty's back

Betty's back! On March 20th Whistlerites will be once again treated to the songs and singing of Betty Chaba.

Betty who is originally from Edmonton arrived on the Vancouver scene in 1970 and has since sung with the Foreman-Young Band, The Bim Band, Blue Northern, in a trio with Gary Koliger and Blue Williams (formed especially for Whistler shows) as a single and in a myriad of other combinations.

Get back to GARIBALDI

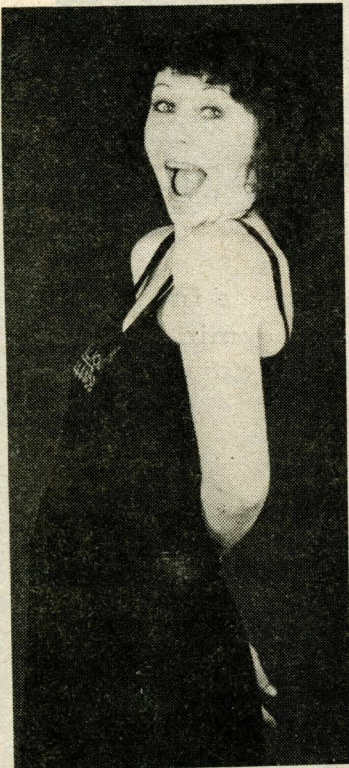
(Chaba-Williams)

Sunshine shining on a mountain road
Get back to Garibaldi
Soon be snowing where I wanna go
Get back to Garibaldi

Hills and trees, boots and skis
Any kinda weather, when we're gonna get together
On the smiling faces of the mountain scene
Let me tell you what I mean:

Noon sun warming up a Whistler girl
Get back to Garibaldi
Up the mountain to the top of the world
Get back to Garibaldi

I don't give a hoot about humming in the city,
They mumble at me there
When I get enough, that's when you see me heading
Right back upstairs
Sunshine shining on a mountain road
Get back to Garibaldi
Sun is blazing, but I know there's snow!
Get back to Garibaldi.



BETTY & THE LADIES

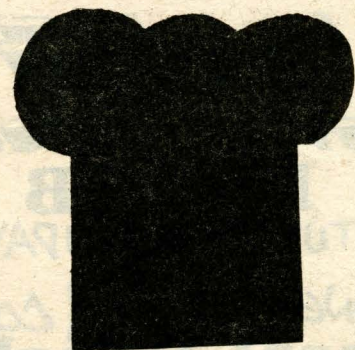


Betty is also the producer, driving force and a singer/songwriter in the highly acclaimed Ladies in the Lights concerts. The three concerts featured the cream of the west coast's female dancers and an all-star backup band of local musicians. Featured were the likes of Shari Ulrich, Jane Mortifee, Betty, Blue Williams, Mary Saxton, Nancy Nash, Susan Jacks and Denise McCann.

The first concert was simul-cast live on Co-op T. V. and stereo F. M. radio giving home viewers an historic opportunity to enjoy the concert.

An album of the first Ladies in Lights concert has just been released on the Radio Canada International network which distributes music to commercial A. M. and F. M. stations. The album is diverse, from the lush ballad stylings of Shari Ulrich's (ex-Pied Pumpkin) "Mysterious Child" to the Denise McCann rocker, "Save It" featuring some fine guitar work by Brent Shindell. People familiar with Betty's Whistler performances will be pleased to have thier memories jogged with 'How Long' and 'Can't Get Enough', two of my favorites on the album. Unfortunately the album is not available commercially but may be purchased by sending \$8.99 to CBC Merchandising, Box 500, Terminal A, Toronto M5W 1E6. Ask for 'Ladies in Lights', RCI 505. Well worth it!

Betty, who for the last few years has been caught in record company entanglements (that eventually led to the demise of the highly touted Foreman-Young Band) and personal problems associated with working 18 hours a day producing 'Ladies in Lights' has emerged with her spunk not only intact but fortified. "I'm on top of it" and looking forward to getting back to Garibaldi.

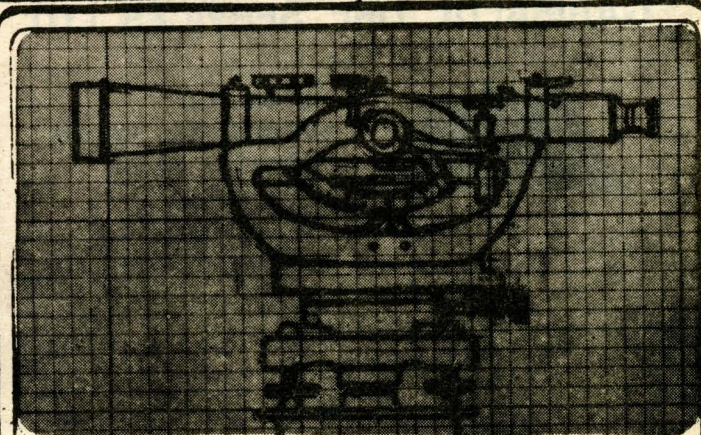


JB's

Restaurant & Lounge

FEATURING **BETTY
CHABA**

MARCH 20, 21 & 22.
MARCH 27, 28 & 29.
Phone 932.5144

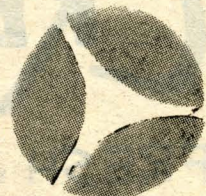


ROBERT B. BROWN & ASSOCIATES

P. Eng., B.C.L.S.
surveyors and engineers
Box 13 WHISTLER
932-5426

for lower prices
and friendly faces
and the largest selection of
**GROCERIES &
FRESH PRODUCE**
... shop at the Squamish

Overwaitea



WHISTLER COURIER SERVICE

BONDED · INSURED · LICENSED

Box 1600
932-3244

L'APRES

LE CLUB

TUESDAY-SUNDAY

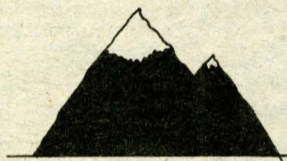
SONG WRITER & COMIC
Michael Dougherty
FROM SAN FRANCISCO
SUN VALLEY
LAS VEGAS

WHISTLER
NOW APPEARING IN
L'APRES DINING LOUNGE

10:PM — 2:AM

NEW SNACK MENU
INCLUDING PIZZA.
10PM - 2AM

GARIBALDI TIRE SERVICES LTD.



P.O. BOX 1416
SQUAMISH, B.C. V0N 3G0
TELEPHONE: 892-3131

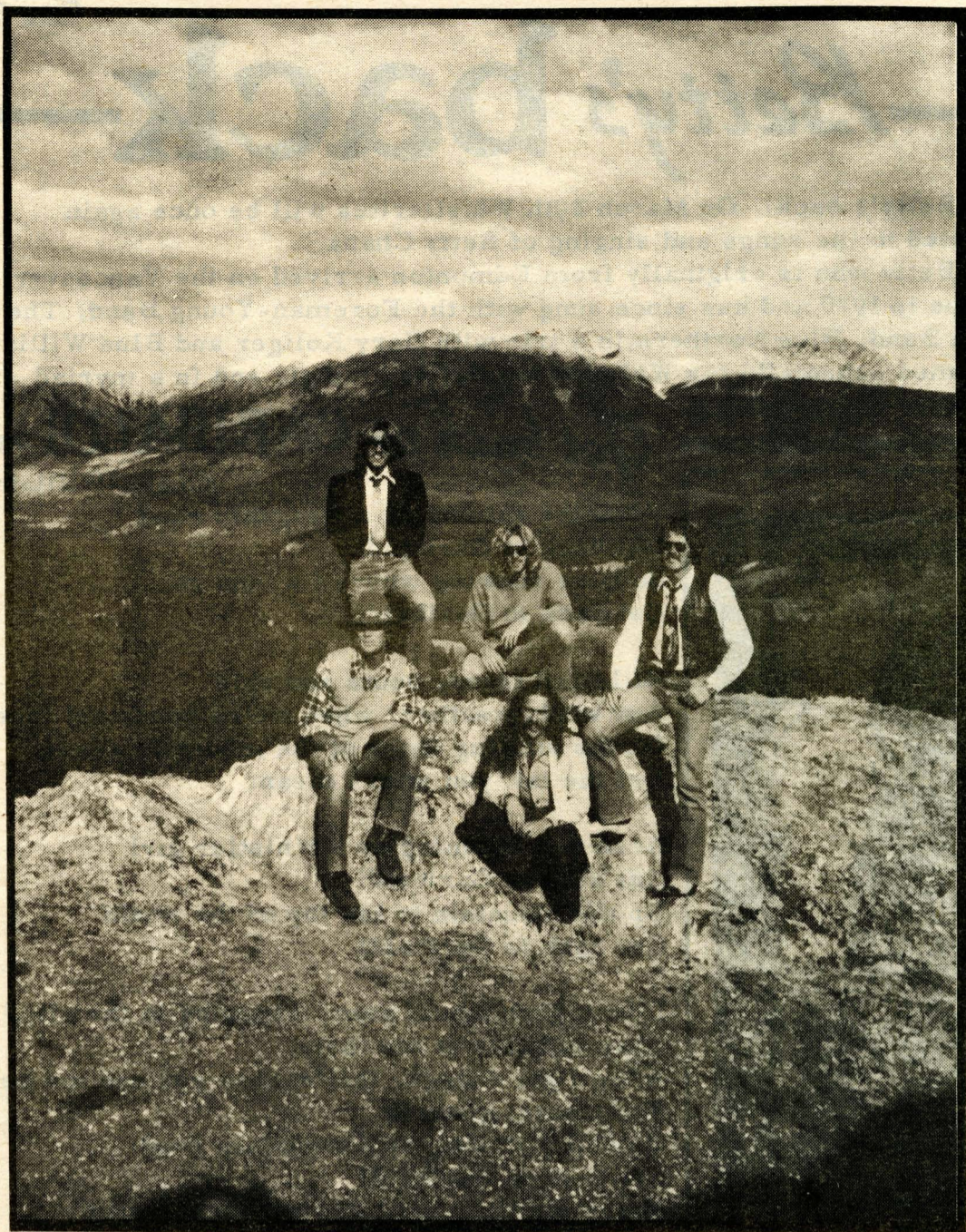
No Tire Too Big
Or Too Small



PEMBERTON TIRE SALES

A Division of Garibaldi Tire Services Ltd.

ASTER AVENUE, PEMBERTON, B.C. V0N 2L0 894-6812



The High Country Band packed the Mountain House with their country rock sounds, at the beginning of March. With their diverse guitar stylings and good vocal range they ran the gamut from rock to swing and back to country. Clockwise from top left are Michael (Magic Fingers) Smith, Steve Henderson (The Reverend Stainless Steve Steel), Ted (Woodhead) Woodhouse, (The Commander) Tom Wills, formerly with Lighthouse, Jeff (Ieroy) Heintzman (Yes that's Martha's brother. Look for them back at the beginning of the summer.

Micha
he doe
songst
and oth
along
add it
pertoi

BRACKENDALE PRESENTS: ART GALLERY

AN EXHIBITION OF THE
WESTCOAST LIFESTYLE:

EXHIBITION OF WESTCOAST LIFESTYLES • MODELS OF SUCH
POETRY • STAIN GLASS BLUEPRINTS • PHOTOGRAPHS • DRAWINGS PAINTING

HONEY POT natural foods



VITAMINS, HERBS,
MINERALS, OILS,
BULK FOODS, LOCAL HONEY,
TRAIL MIXES, LOCAL INDIAN
CRAFTS, OUR OWN BREAD

CREATIVE KITCHEN

FRESH JUICES, SOUPS,
SALADS, SANDWICHES,
BEVERAGES, VEGIE
BURGERS, BAKED
GOODS, FROZEN YOGURT
CLEVELAND SQUAMISH
AVE.



Communications Co., Ltd.

A Complete Printing Creative Art Service

From Conception to Finished Product.

932-5332



* **BEAU'S RESTAURANT**
 Fine Continental Cuisine *
 P.O. Box 297 Whistler B.C. V0N1B0
 *
RAINBOW SKI VILLAGE
2 1/2 mi. North of Whistler Town Centre
 Reservations 932-5565 *

**WHISTLER CREEK
 SKI SHOP**
 ACROSS FROM THE HUSKY STATION

"Super Sale!"
 SKIS - 30%
 SWEATERS - 25%
 SUITS - 30%
 VESTS - 25%
 GLOVES - 20%
 POLES - 20%
 SKI BOOTS - 30%



Pierre Trudeau is seen here doing his damndest to try and get rid of an entourage of goons, press, local minor dignitaries, overanxious photographers, swells, and at least one ex-darling of the Canadian slopes.

Michael Dougherty is caught doing what he does best. Michael, comedian and songster will be found performing this and other unnatural acts at L'Apres. Bring along your favorite joke and Mike will add it to what is probably the largest repertoire this side of Garibaldi.

For service above and beyond the call of duty, the Answer would like to thank Paul Burrows for saving us a trip to town.

HAND—BUILT ISLANDS OPEN MARCH 8 AND
HAND—BUILT HOUSES INTO APRIL
 information phone: (604) 898-3333.

OF SUCH HOUSES AND THEIR SPIRIT • POTTERY • WEAVINGS • SCULPTURED BIRD CAGES
 PAINTINGS • SPECIAL SLIDE SHOW OF INDIGENOUS HAND-MADE ISLANDS/HOUSES



**DINO'S
 PLACE**

**STEAK &
 SPAGHETTI
 HOUSE**
 at the
WHITE GOLD INN
TAKE OUT
ORDERS
 phone 932-3643

Open
7 Days a Week

Breakfast
 Lunch
 Dinner

RUSSELL'S

TASTE TASTE TASTE TASTE
 TASTE TASTE TASTE
 TASTE TASTE TASTE
 TASTE TASTE TASTE

932-3866

**THE
 BLACKCOMB**

WHISTLER VILLAGE

FAREWELL TUTANKHAMUN

by Prof. J. Monahan

COASTAL MOUNTAIN EXCAVATIONS

• underground utilities
• excavations
WHISTLER AREA
NIGEL WOODS —PHONE— 932 5469



Squamish Photo Shop & Studio

- Weddings, portraits, commercial
- Quality photofinishing
- Supplies and service of most brands
- Projector and AV rentals
 - Slide, film, video productions

Phone (604) 892-3734
38028 Cleveland Avenue, P.O. Box 78
Squamish, B.C. V0N 3G0
Proprietors: Walter & Kirsti Heidman

The burial chamber itself, and Tut, had been cleared out. But the treasury, a small room next to the chamber, had been sealed off, as was an annex opposite the tomb's entrance. The clue was a chip of alabaster, fallen to the floor in some distant moment of antiquity. The long corridor led suprisingly downwards beneath the base of the pyramid, at an angle equal to afternoon sun rays, across the shifting desert sands. A light touch against the stone, opened a passageway, into the dark secrets of an ancient affair.

Professor Morarity struck a wooden match against a wall and turned to his companion.

"What do you make of it " his voice echoed.

"An empty room... "

Doctor Bolton of the Vienna Institute crept slowly towards a pedestal, only partially visible, in the flickering light.

"Quickly Professor, over here, " he shouted.

"Damm match " cried Morarity burning his finger tips.

There was an urn, more the size of a drinking stein, than a flower pot. Fashioned from river clay, it was a dull grey, with lightly brushed hieroglyphics in gold. It was an old story.

"Seems he met her at the marketplace in Thebes " mused Dr. Bolton.

"Othello... ?" questioned the scholarly Morarity.

She had jet black hair, flowing to the small of her back, but cut straight across the forehead, above the dark eyes. The high cheekbones and deeply olive complexion, she walked with the grace of palms bending in a warm breeze. The king was about to take a fall.

She is sitting on a marble bench, in the courtyard of the palace. She is searching, lovers are hand in hand in the archway. The king is too self-centered to notice, and when she leaves him, calls her a two faced harlot.

"Good grief " sighed Morarity, "but of course the General was nothing but a piece of cardboard. "

"Not so... not so " countered Dr. Bolton.

LANDSCAPING
by Dores
932/3349

Call us for..

Autoplan

CAR INSURANCE
PLATES & DECALS

PEMBERTON M/V SUB BRANCH

INSURANCE CORPORATION
OF BRITISH COLUMBIA.

Call PEMBERTON 894-6403

BRANCH HOURS 10⁰⁰AM. 5⁰⁰PM

JOHN A. COSULICH (AGENT.)

THE MUTUAL FIRE INSURANCE CO. OF BC.
BOX 70, PEMBERTON B.C.

During March the Squamish Library will co-sponsor with BC Hydro a three part program. Dates will be announced later. Topics will be;
Building Energy Efficient Homes
Making your existing home more energy efficient.
Solar Energy.

It was a means of getting even with Tut, for his selfishness and complacency. But then she'd a new universe, a world with it's own loyalties, passions, dangers and satisfactions. You have to give and give, and give some more, until there is nothing left to give, and then you have to give some more.

*If a tree falls in the forest and there is no one about to hear the crash, then is it real?

*If I cry I love you ten thousand times across the waters of the Nile and no one is about to hear it, then is it real?

The king is running through the streets, a mad night in the tropic of cancer. A blind beggar in rags mumbles:

(editors note: some readers may recognize this yarn from the 1923 National Conserative. Much to our dismay, during paste up of the re-run, we found that the last page was missing. This led to an exhausting search for the author, who turned up in an unspeakable waterfront diye along Main St. He wore a schrapnel torn overcoat and stared straight ahead over a glass of stale liquid. There was a three day growth of beard on his face and white deposits at the corners of his mouth.

"The curse of the pharaohs " he whispered.

Papers and old manuscripts stuck out at all angles from his pockets. Unable to produce the correct page from his complicated filing system, he accepted pencil and paper. Still continuing to stare straight ahead, and with shaking hand, he scribbled the following:

The king is running through the streets, a mad night in the tropic of cancer. A blind beggar in rags mumbles:

"Nothing in the desert but empty caravans and ghosts."

"Bolton, lets get out of here " said Morarity.

"No wait... the kings answer."

He said: "I shall rise a phoenix from the ashes."



(editors note: Scholars still debate what caused the death of King Tutankhamun. In November of 1969, nine British researchers traveled to Luxor, Egypt to end the speculation. Removing Tut's mummy from its sarcophagus Dr. David Reece, anatomy professor at the University of Liverpool, took infrared photos of Tut. There was a hole in the skull at the level of the left cheek. Was it murder or an accident? No one knows for certain, but that the mystery remains hidden forever, in the shifting sands of time.)



932-3812

YOUR ENTERTAINMENT SPOT AT WHISTLER
LOCATED AT MAIN ENTRANCE TO WHISTLER VILLAGE
DAILY — 7pm to 2am SUNDAY — 7pm to 11pm

CABARET

FEATURING

- * COUNTRY ROCK BANDS
- * HOT SNACKS
- * EXOTIC DESSERTS
- * MOST FRIENDLY SERVICE

WHISTLER
REAL ESTATE
SPECIALISTS



LOTS - CONDOMINIUMS CABINS

NOW LOCATED IN WHISTLER VILLAGE
AT 4200 BLACKCOMB PROFESSIONAL BLDG

Will Moffatt - 932-5741

Bob Meile - 932-5434

Steve Johnston - 932-5982

Ann Jepson - 932-5648

PHONE: 932-4246 — Toll free 685-4120
Vancouver Office — 682-3764



"WE LIVE HERE"

CAPILANO

HIGHLANDS LTD.

CPL

CLEARWATER PROJECTS LTD

FOUNDATIONS FRAMING FINISHING

932-5636 932-3392

WHISTLER BC

P

TOTAL PERFORMANCE

Automotive, Recreational and Marine
Supplies Ltd.

Holley

EQUIPPED

BOX 430, GARIBALDI HIGHLANDS, B.C.

JACK RIDDELL

BUS: 898-3684
RES: 898-5559



MOUNTAIN MOMENTS

Box 165
WHISTLER, B.C.
CANADA V0N 1B0

custom
photography

NOW OPEN IN TOWN CENTRE
IN THE CLOCK TOWER

GALLERY, PHOTO FINISHING, FRAMING
HELICOPTER SKI BOOKINGS AND
BACKCOUNTRY EQUIPMENT

GREG GRIFFITH 932-3274
HERB BLEUR 932-5331

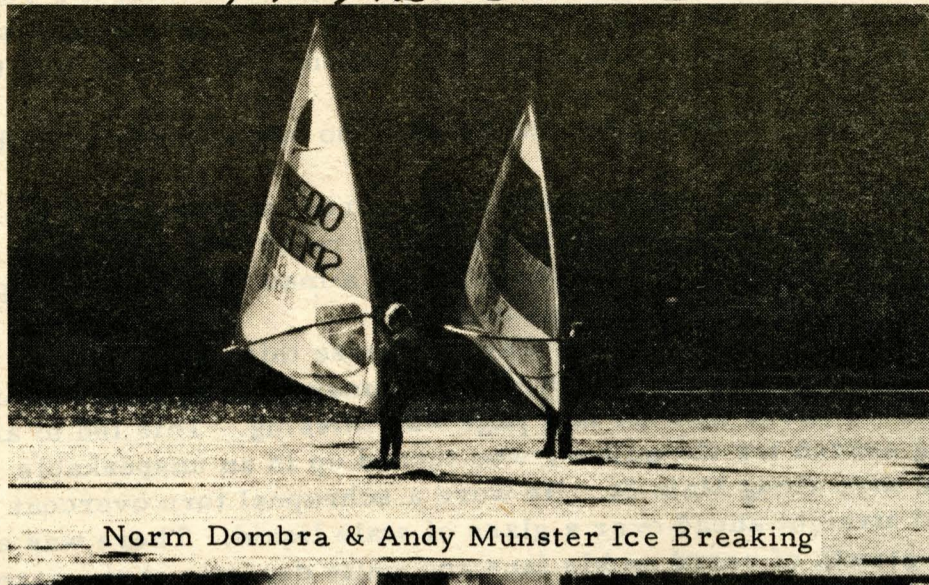
BOARDSAILING BUYING TIPS

by ANDREW STONER

RENDEZVOUS 765 On Blackcomb Mountain

Offers Catering Service
For Private Groups & Functions
Serving Breakfast Daily

Phone Evenings
932-5819



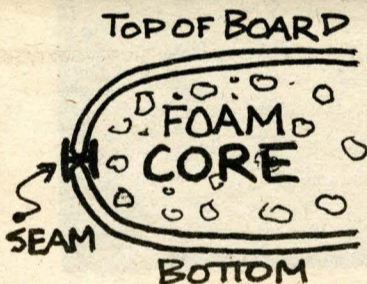
Norm Dombra & Andy Munster Ice Breaking

Alta Lake is still unfrozen and although its snowing as I write this I think that we are in for a long windsurfing season this year with 3 or 4 large regattas (including B.C. windsurfer champs) and weekly races and slalom events.

At the Vancouver Boat Show I was impressed by the fact that there are now, at a rough count, 33 different sail boards on the Canadian market! So you now have a complete choice of everything from high performance racing machines to complete lemons. As a general rule, you get what you pay for. The racers are expensive... up to \$2,300, and the cheapo's... well it's up to you. To me the best all purpose boards are priced from \$1050 to about \$1400, and in this price range we are looking for strength, durability, weight, and sailing ability.

The weight of most boards without their rigs, is about 40 lbs. If a boards weight exceeds this by more than 5-6 lbs, I would avoid it. Light is good but not always strong.

Durability and strength are to an inexperienced eye hard to ascertain but a board made of a semi-pliable ski base type polyethelene plastic will take more bumps, breaks, scrapes, and flights from your roof racks than a harder more brittle A.B.S. plastic or fiberglass. Also a board that is molded in one piece to me seems preferable to a board of 2 halves which can eventually leak or delaminate. A 'H' strip along the seam of the board is good assurance against these defects.



The sailing ability of a sail-board comes from a wide variation of factors.

After checking for a good non-skid surface look for:

a) Hull Shape-A rounded or 'V' bottom will give a board good speed in light winds but makes the board harder and slower to turn and in a strong wind, hard to control like a high speed flat water racing design.

A flat bottom sacrifices a little speed in light winds but ensures manoeverability and control at all speeds and wind conditions.

ie: All round racing, pleasure freestyle design.

b) The Rig- Most manufactures supply a 56-60 sq. ft. sail, larger or smaller are usually options. Booms should fit the mast snugly for a loose or sloppy fit results in lost control. Here a system that attaches the mast and boom with a rope seems preferable to a clip or mechanical system.

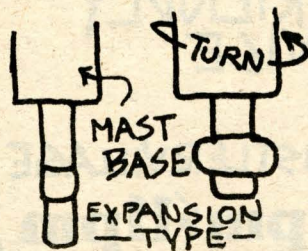
The boom itself should be asymmetrical and curved throughout their length. Whether the tubing is oval, round or hexagonal is up to you but a rubberised grip is far preferable to have aluminum, wood, cloth or tape.



The mast should be light, flexible and strong. Check for smooth uniformly wrapped fiberglass, ie., an even finish with no holes or unsaturated fibres. Additional thickness at the point where the booms tie on ensures strength.

c) Universals - are mainly of 3 types

- a friction or 'Jam it in' type which is durable and very well proven
- a 'clip' type, where the universal is held into the board with a wire clip. Make sure its easily removeable but won't fall out.
- An expansion type is also effective.



cont. next page

**Whistler
Windsurfing
Ltd**

For Retail Inquiries and Orders
PHONE 932-5637

**WHISTLER
RENTAL
ACCOMMODATION
CENTRE LTD**

FOR RESERVATIONS PHONE
932-4242

**SQUAMISH
Hotel**

**REASONABLY PRICED
* MEALS *
NEIGHBORHOOD PUB**

"Family Atmosphere"

**3241 2ND AVE
892-3811**



With all the grand openings and new spots in town to try, you sometimes forget your old friends. So it was in search of something 'different' that led us back to Beau's.

And it was something different that we got! Controlled panic! The water had been out all afternoon and the chef Luc Gruffaz of Lyons, France had been forced to abandon his chef's jacket for plumbers pants. We were told at six we could come at our leisure but in the interim the parking lot had filled up. Jeanette and Leslie, the only two waitresses, served forty dinners in one hour. Our hostess Betty Jarvis even pressed old friend Joanne McNally into serving behind the bar; who's theory became, 'when in doubt pour well.'

Despite these odds dinner went without a hitch. It was delicious and served on time. The soups were all superb, I know, I tasted them all. In fact, every thing was good! Monahan even said it was the best steak he'd had this year. Of course he did qualify it by saying at the wages he makes writing for this rag it's the only steak he'd had this year. Speaking of writers for this rag, the more timid diners among you will be pleased to know that the 4' x 5' poster of Beau and Bosco has been retired to the ski shop area. It may be viewed en route to the can.

It was our host, Tom Jarvis night off so he was spared the surprise rush of diners. Rumour has it he was at our 'pub without a phone', Tapleys.

Getting back to Beaus. They're having a contest! The idea is to name the "steak and seafood" combo that Beau's is introducing to fill the void left by our dear departed Keg. You can win a brand new sailboard by figuring out something better than 'surf and turf'. For more details see the back cover of this issue.

Ya, you can't beat the service out there. If you time it right you even receive executive limo service to the Mountain House but don't count on that.

d) Daggerboards- should be stiff and tightly fitting.

Many sail boards have multi-positioned daggerboards which is a great idea as long as there is some device to keep it in the desired position. Most of them don't, which means that it will fold back against the hull unless you keep your foot on it.

One other important thing to look for is the availability of spare parts. (I'll bet 75% of retailers can't get the parts when you want them) The sail boards that appeal to me are those with the least mechanical and moving parts. In other words simplicity and function in design. The fewer working parts means less chance of breakdown and hence more sailing freedom.

In the next issue look for the 2nd hand board market and a summer regatta schedule.

ALL SEASON'S RESORT MANAGEMENT LTD.

call us for information regarding

MINI-MANAGEMENT FOR CABIN OR CONDO OWNERS

— rent collection — emergencies — security checks —

FULL SERVICE PROPERTY MANAGEMENT FOR MULTIPLE UNITS

— rentals — housekeeping — maintenance —

RENTAL LISTINGS FOR OWNERS AND RENTERS

— references — deposits — follow-up —

WHISTLER'S YEAR-ROUND MANAGEMENT COMPANY

604 - 932 - 4288 or Write P.O. Box 93, Whistler, B. C. V0N 1B0

MacGREGOR PACIFIC REALTY (1978) LTD.



**YOUR
WHISTLER
REAL ESTATE
PEOPLE**

**OUR NEW OFFICE NOW IN
TOWN CENTRE**

CONTACT:

DREW MEREDITH
ARV PELLEGRIN
MICHEAL D'ARTOIS
JAN SIMPSON
PAVE IRWIN

OPEN DAILY 9-5 PM
420 RAINBOW BLDG.
932-5538 ^{OR} VAN TOLL FREE 681-6627

HERITAGE Car Care

Pick-up & Delivery Service

Available

For Appointments Call 932-3689
ALTA VISTA WHISTLER

Squamish LINK

VALLEY HARDWARE

With all your outdoor needs

Paints & Supplies
Houseware & Plumbing
Outdoor Supplies



892-3711

WHISTLER VILLAGE SPORTS

IN TOWN CENTRE

Spring Sale!!

SKIS - 30%
SWEATERS - 25%
SUITS - 30%
VESTS - 25%
GLOVES - 20%
POLES - 20%
SKI BOOTS - 30%

WHISTLER ANSWER FUNNY PAGES

A COLLECTION OF CHUCKLES, LAFFS, YUKS, TICKLERS AND OTHER FUNNY... STUFF.

TELEPHONE 689-3098 "24 HOURS"

IMAGE

FOR THE CALENDAR OF EVENTS

Single Scene America

Box 34247 STATION'D' VANCOUVER BC V6J4N8

if your upsidedown

SNOW

Your ANSWER to the Question is

MONO

AUTORECOVERY
24 HOUR TOWING SERVICE

932-5311

Master Charge CHARGE X

Squamish Office Supplies

38033 CLEVELAND AVE.

HOURS: 9AM - 5:30 PM MON-FRI
10AM - 4 PM SATURDAY

892-3212

At Budget you're #1

Great service and great rates!

Budget knows who counts—you. And that's a difference you'll like. Get great rates by the day, weekend, or longer on Ford and other fine cars. Most major credit cards honored.



Blackcomb Lodge Whistler Village 932-3818

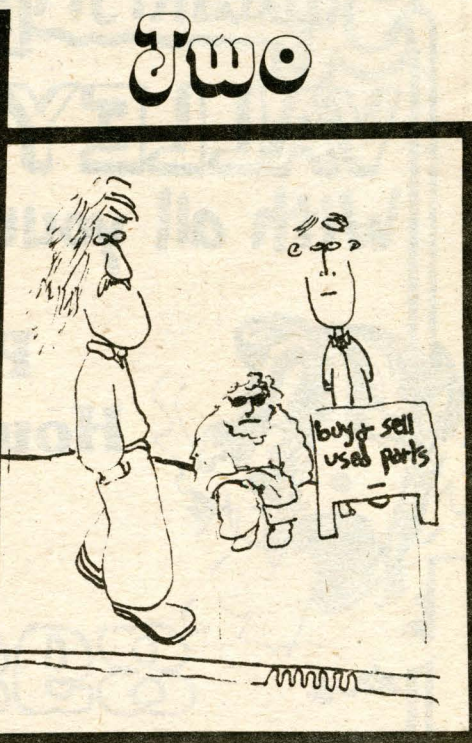
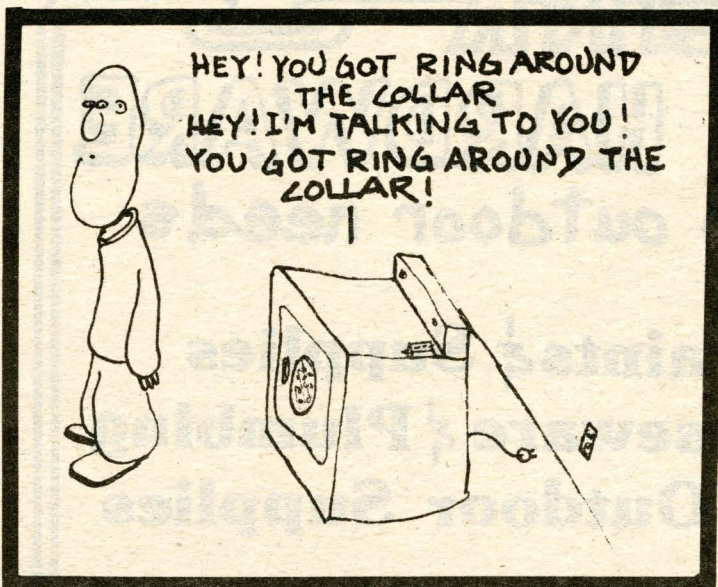
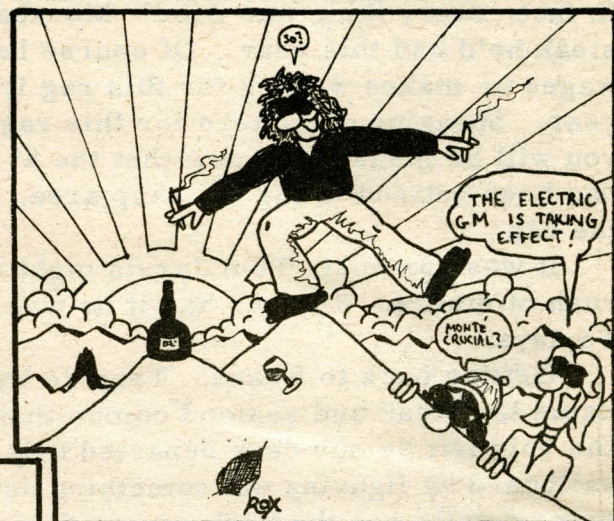
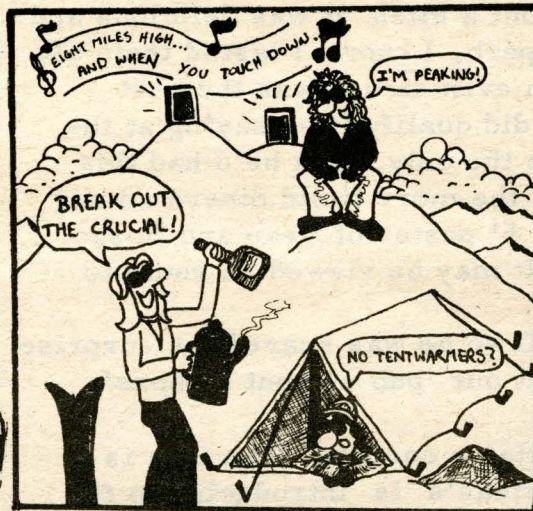
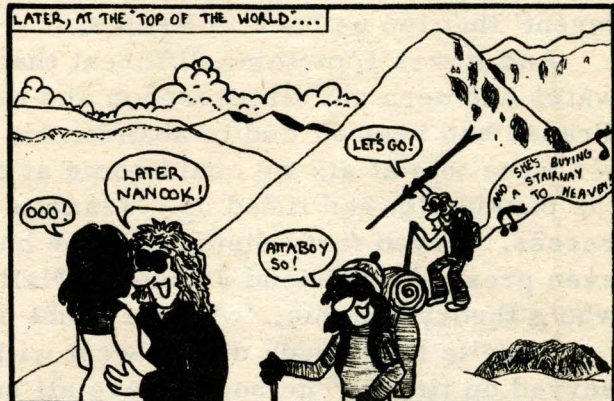
Budget rent a car

A Budget System Licensee

Use your Sears credit card at authorized distribution centers in most Budget offices. Check local office for rental requirements. Call: © 1979 Budget Rent a Car Corp.

Sears Rent a Car SIMPSONS SEARS LIMITED

PEAK Bros.



by Malcolm

LOCALMAN

THIS MONTH'S ALBUM REVIEWS

●●●● 4 VARNETS - DON'T MISS IT
 ●●●● 3 VARNETS - A MUST HAVE
 ●●●● 2 VARNETS - SUPER
 ●●●● VARIOUS ARTISTS - "ROCKERS"
 ORIGINAL SOUNDTRACK FEATURING
 PETER TOSH, THIRD WORLD, THE HEPTONES.

●●●● THE CLASH - SANDANISTA! 3 RECORD SET E34 37037
 RARELY DOES COME AN ALBUM THAT CAN MAINTAIN A PACE AND CONTINUITY
 OVER 3 RECORDS. SANDANISTA! IS THE CLASH'S "WHITE ALBUM", AND MARKS A
 SIGNIFICANT PROGRESSION. SIDES 3+4 ARE THE MEAT OF THE ALBUM; SIDE 1 IS
 A PLEASURE TO LISTEN TO. SIDES 5+6 HAVE SHORT CLIPS AND DUBS, PLUS A
 RE-WORKING OF "CAREER OPPORTUNITIES" THAT WILL SURPRISE. THIS ALBUM SHOULD
 PROVE BEYOND ANY DOUBT THAT THE CLASH REALLY ARE "THE ONLY BAND THAT MATTERS"

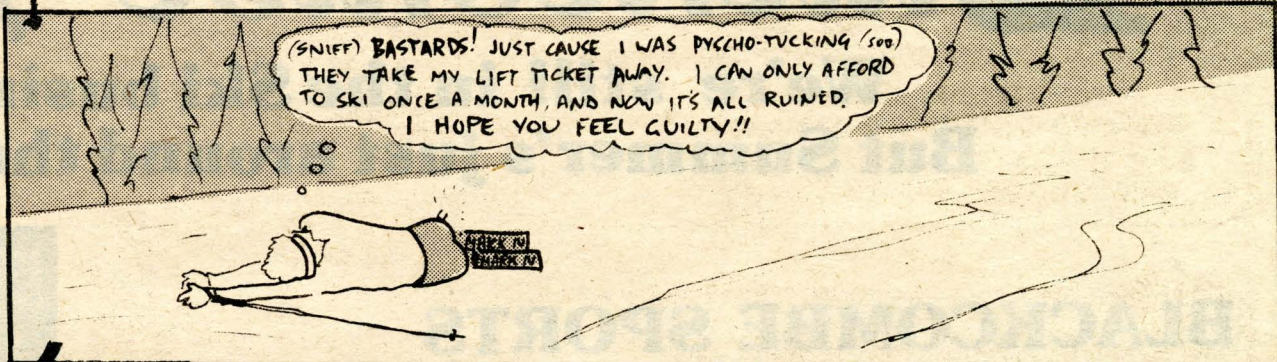
LOCALMAN'S GUIDE TO THE WEEKEND SKIER.....
THIS MONTH: DESIGNER EQUIPMENTUS

- GUILTED TUBE \$50
- PIERRE CARDIN GOGGLES \$75
- CAN YOU BELIEVE THESE THINGS? \$400
- NEOPRENE NO DOUBT
- PADDED KNEES, RIGHT.
- CHRIST, GUILTED GATORS!
- HANSON, SCOTT, OR LADY GARMONT SURE.
- GOD ONLY KNOWS WHAT KIND OF BINDINGS THESE ARE

ONE DAY ON WHISKEY JACK....



NO TUCKING WHISKEY JACK..



MEANWHILE, AT TAPLEY'S

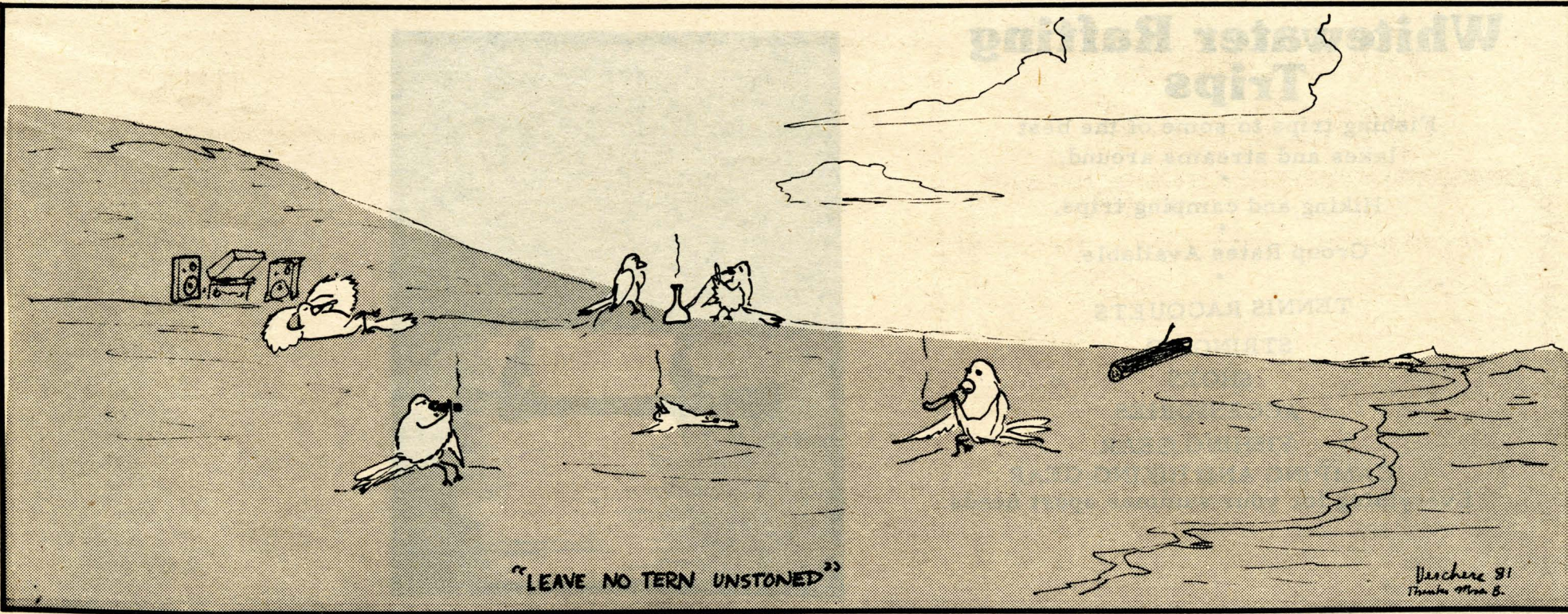
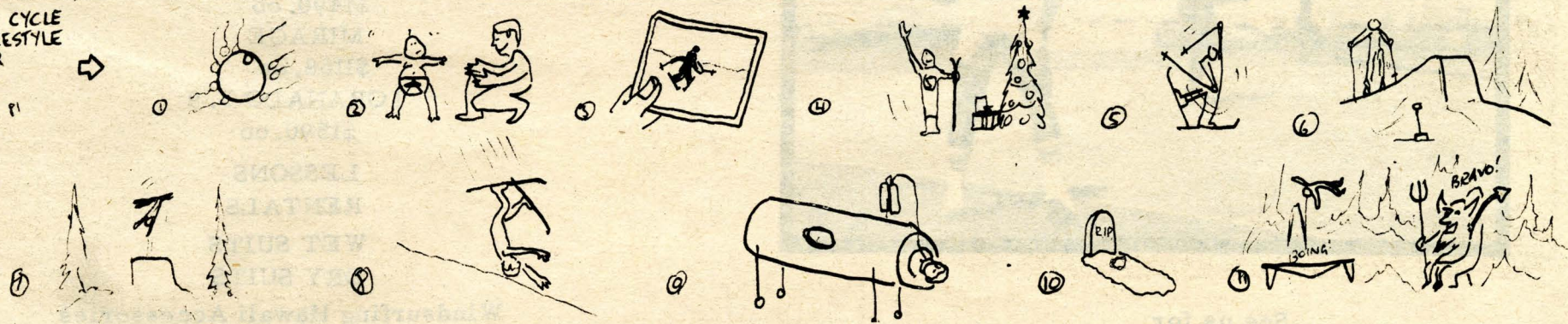


WHILE FLYING ABOUT, LOCALMAN SEES THE DISTRAUGHT YOUNG PSYCHO TUCKER AND OFFERS HELP...



THE LIFE CYCLE OF A FREESTYLE SKIER

Version #1





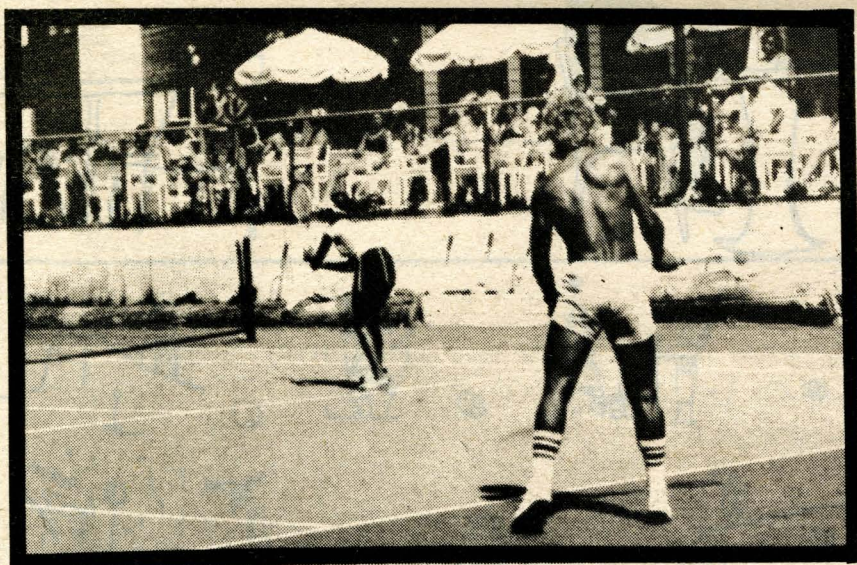
Blackcombe Sports

**We're still in the Ski business...
But Summer's just around the corner.**

BLACKCOMBE SPORTS Boardsailing Club

MEMBERS RECEIVE: The local use of any of our boards for the duration of the summer. (Except when rented)

- *10% Discount on any boardsailing equipment and accessories.
- *30% Discount on lessons.
- *30% Discount on wet suit rentals.
- *Free entry into any Blackcombe Sports Boardsailing Club sponsored regatta.



See us for

Whitewater Rafting Trips

Fishing trips to some of the best lakes and streams around.

Hiking and camping trips.

Group Rates Available.

TENNIS RACQUETS

STRINGING

SHOES

ACCESSORIES

FISHING GEAR

CAMPING AND HIKING GEAR

Everything for your summer sport needs.



The Official Olympic Board

WINDGLIDER

WINDGLIDER OLYMPIC ONE DESIGN

\$1490.00

MIRAGE

\$1168.00

TORANADO 3.9

\$1590.00

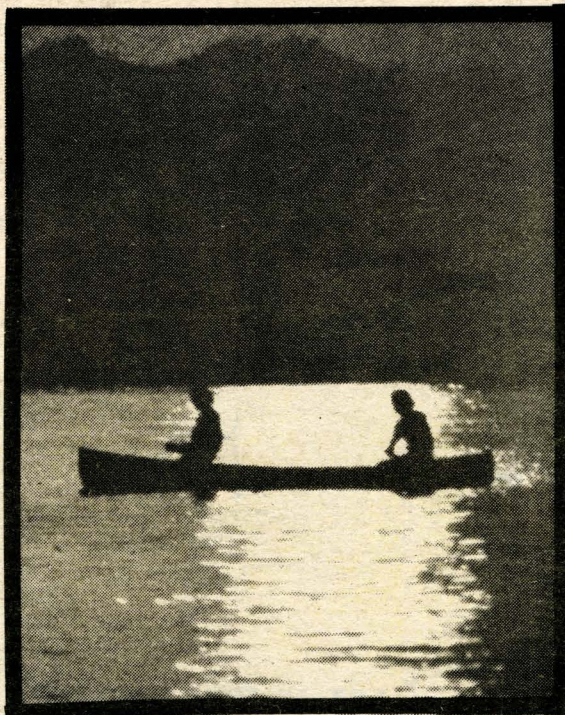
LESSONS

RENTALS

WET SUITS

DRY SUITS

Windsurfing Hawaii Accessories



BEAU'S

**Fine Continental Cuisine
2.5mi North of Whistler Village
Reservations 932-5565**

To The Keg at the Mountain

Goodbye and thankyou for the memories and good times! We anxiously await the new Keg era.

With the temporary Disapearance of the Keg we will gladly fill that void by soon offering a popularly priced steak and seafood combo (lobster/crab) in order to satisfy all those Keg Junkies.

See you To-nite!

Contest

Win a Brand New Sailboard!

By naming our new steak and seafood combo, (surf and Turf) "is old and tired"

All entries will be judged by a female panel of excellent sailboarders and/or steak and seafood eaters. All entries will be judged on originality and creativity.

Deliver entries to Beau's Sail Board Contest at Beau's Restaurent, Whistler VON IB0

Open For Dinner 7 Nights a Week

Mon. -Sat. 6:00pm - 10:00pm
Sundays 5:30pm - 9:30pm

BRUNCH

Saturdays and Sundays
11:30am-2:00pm

Famous For Rainbow Burgers and Eggs Benedict

"Our customers continually compliment us on our service, food quality and atmosphere."

Support your 'local' businessmen